

# Herramientas de fontanería / Plumbing tools

## Tenazas / Pliers

### 527 Tenaza de ajuste rápido

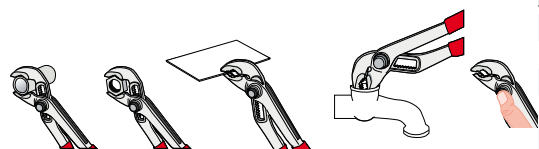
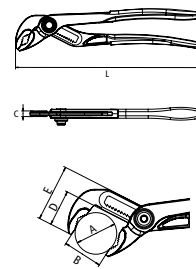
### Quick adjust pliers

- Herramienta profesional de ajuste con apertura de bocas rápida y precisa.
- La selección de la apertura es fija, sin posibilidad de desajustes involuntarios.
- Botón de ajuste rápido y preciso.
- Doble tratamiento térmico para una durabilidad extrema que asegura una larga vida a las bocas.
- M.I.M. (Metal Injection Molding) pieza de bloqueo de gran dureza y precisión que proporciona una fuerza excepcional.
- Diseño de las bocas autobloqueante al trabajar con tubo o tuercas hexagonales.

- Professional tool with quick and precise jaw opening.
- Fixed opening selection, without unintentional maladjustment.
- Quick and precise adjust button.
- Dual heat treatment for extremely long jaw life.
- Extremely hard and precise M.I.M. (Metal Injection Molding) locking piece for exceptional strength.
- Self locking jaw design for work with pipes or hexagonal nuts.



Made in Spain



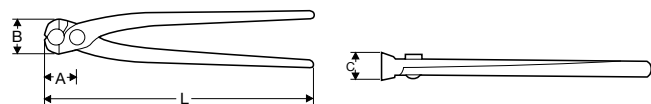
| No.       | L in. | L mm | A max Ø in. | B mm | C mm | D mm | E mm | kg  |   |   |   |
|-----------|-------|------|-------------|------|------|------|------|-----|---|---|---|
| 527070000 | 7     | 175  | 1"          | 30   | 6,5  | 30,5 | 49   | 0,2 | 6 | • |   |
| 527100000 | 10    | 250  | 1.1/4"      | 32   | 7,5  | 33   | 53   | 0,3 | 6 | • |   |
| 52710P000 | 10    | 250  | 1.1/4"      | 32   | 7,5  | 33   | 53   | 0,3 | 6 |   | • |
| 527120000 | 12    | 300  | 1.1/2"      | 43   | 8,75 | 48   | 73   | 0,5 | 6 | • |   |
| 52712P000 | 12    | 300  | 1.1/2"      | 43   | 8,75 | 48   | 73   | 0,5 | 6 |   | • |

### 507 508 Tenaza rusa / automática

### Concretor's nippers

- Indicada para encofradores y enchapadores.
- Forjada en acero especial para herramienta. Gran robustez y elasticidad. Excelente corte y durabilidad.

- Ideal for formwork and platework.
- Completely drop forged from special tool steel. Robust and resilient.
- Excellent cut and durability.



UNE 16-536

Made in Spain



| No.   | L in.                   | A max in. | B mm | C mm | kg  |   |   |
|---|-------------------------|-----------|------|------|-----|---|---|
| Mangos sin plastificar. Bare handles.                 |                         |           |      |      |     |   |   |
| 50709C000   | 9                       | 27        | 30   | 22   | 0,3 | 6 | • |
| 50710C000   | 10                      | 32        | 36   | 26   | 0,4 | 6 | • |
| Con mangos plastificados. Plastic sleeves on handles. |                         |           |      |      |     |   |   |
| 507090000   | 9                       | 27        | 30   | 22   | 0,3 | 6 | • |
| 507100000   | 10                      | 32        | 36   | 26   | 0,4 | 6 | • |
| 507110000   | 11                      | 32        | 36   | 26   | 0,5 | 6 | • |
| 500230000   | Expositor 507 (9") x 12 |           |      |      | 3,9 |   |   |

- Muelle de apertura automática para mayor manejabilidad.

- Automatic opening spring for easy handling.



| No.  | L in. | A max in. | B mm | C mm | kg  |   |   |
|--|-------|-----------|------|------|-----|---|---|
| Muelle de apertura automática. Automatic opening spring. |       |           |      |      |     |   |   |
| 508090000  | 9     | 27        | 30   | 22   | 0,3 | 6 | • |
| 508100000  | 10    | 32        | 36   | 26   | 0,4 | 6 | • |